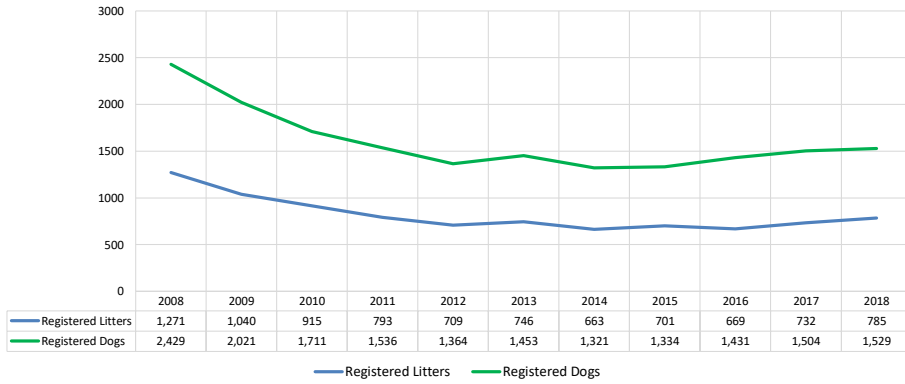


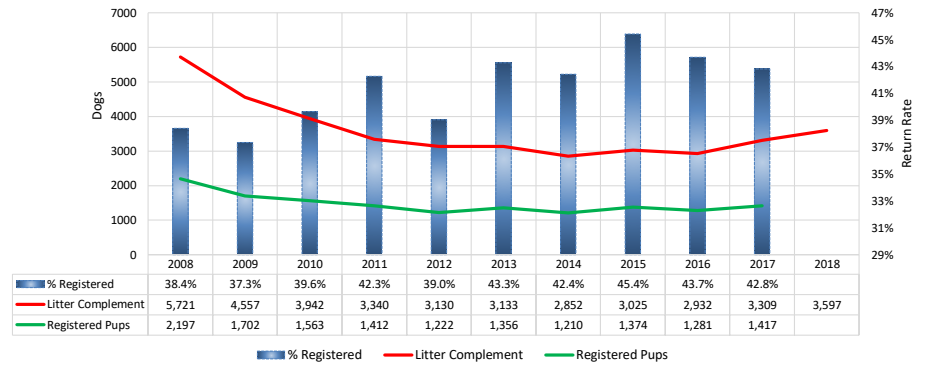
Scottish Terriers												
Metric	2008	2009	2010	2011	2012	2013	2014	2015	2016	2017	2018	Notes
<b>Litter #'s &amp; Litter Related Stats</b>												
Registered Litters	1,271	1,040	915	793	709	746	663	701	669	732	785	# AKC litters registered each year
Litter Complement	5,721	4,557	3,942	3,340	3,130	3,133	2,852	3,025	2,932	3,309	3,597	# Pups in each year's litters (known as the "Complement")
Average Complement	4.50	4.38	4.31	4.21	4.41	4.20	4.30	4.32	4.38	4.52	4.58	Average # of pups per litter
Individually Registered Pups (to date)	2,197	1,702	1,563	1,412	1,222	1,356	1,210	1,374	1,281	1,417	1,020	# Pups from each year's litters individually registered (to date)
Actual Return Rate (to date)	38.4%	37.3%	39.6%	42.3%	39.0%	43.3%	42.4%	45.4%	43.7%	42.8%	28.4%	% Pups from each year's litters individually registered (to date)
Limited Registrations (to date)	409	353	286	298	274	295	251	308	344	380	314	# Limited Registrations from each year's litters (to date)
% Complement Registered Limited (to date)	7.1%	7.7%	7.3%	8.9%	8.8%	9.4%	8.8%	10.2%	11.7%	11.5%	8.7%	% Pups from each year's litters Registered as Limited (to date)
Revoked Limited (to date)	2	2	5	-	1	3	3	4	6	4	-	# Revoked Limited Dogs from each year's litters (to date)
Litters from Revoked Limited (to date)	2	2	4	-	1	3	3	4	6	4	-	Litters involving each year's Revoked Limited (to date)
Complement Bitches Bred	305	235	251	235	196	202	199	210	137	76	6	Bitches from each year's litters that have been bred (to date)
Complement Dogs Bred	160	114	135	96	98	107	89	94	81	53	8	Males from each year's litters that have been bred (to date)
Total Complement Bred (to date)	465	349	386	331	294	309	288	304	218	129	14	Total from each year's litters that have been bred (to date)
% Complement Bred (to date)	8.1%	7.7%	9.8%	9.9%	9.4%	9.9%	10.1%	10.0%	7.4%	3.9%	0.4%	% of each year's litters that have been bred (to date)
Complement Bitches in Conformation	165	129	138	134	101	135	122	120	107	118	62	# Bitches from each year's litters in Conformation (to date)
Complement Dogs in Conformation	118	104	93	105	80	112	86	84	73	75	43	# Males from each year's litters in Conformation (to date)
Total Complement in Conformation (to date)	283	233	231	239	181	247	208	204	180	193	105	Total from each year's litters in Conformation (to date)
% Complement in Conformation (to date)	4.9%	5.1%	5.9%	7.2%	5.8%	7.9%	7.3%	6.7%	6.1%	5.8%	2.9%	% of each year's litters in Conformation (to date)
Total Complement in Companion (to date)	23	10	14	15	11	19	16	13	9	8	-	Total from each year's litters in Companion (to date)
% Complement in Companion (to date)	0.40%	0.22%	0.36%	0.45%	0.35%	0.61%	0.56%	0.43%	0.31%	0.24%	0.00%	% of each year's litters in Companion (to date)
Total Complement Placing in Performance (to date)	6	3	6	9	12	22	9	5	5	6	-	Total from each year's litters placing in Performance (to date)
% Complement Placing in Performance (to date)	0.1%	0.1%	0.2%	0.3%	0.4%	0.7%	0.3%	0.2%	0.2%	0.2%	0.0%	% of each year's litters placing in Performance (to date)
<b>Dog #'s &amp; Dog Related Stats</b>												
AKC Dog Registrations	2,349	1,965	1,667	1,491	1,330	1,414	1,277	1,298	1,406	1,484	1,488	# Registered from AKC Litters during each year
FSS Registrations	-	-	-	-	-	-	-	-	-	-	-	# of FSS Dog Registrations each year
Conditional Registrations	38	33	23	15	9	13	7	7	9	2	2	# of Conditional Registrations each year
Open Registrations	1	-	-	-	-	-	-	-	-	-	-	# of Open Registrations each year
Foreign Registrations	41	23	21	30	25	26	37	29	16	18	39	# of Foreign-born Registrations each year
Total Dogs Registered	2,429	2,021	1,711	1,536	1,364	1,453	1,321	1,334	1,431	1,504	1,529	Total Dog Registrations each year
Unique Bitches Bred (each year)	1,055	901	786	704	617	615	561	594	574	618	638	Unique # bitches bred each year
Unique Dogs Bred (each year)	702	614	527	472	386	375	361	375	328	375	368	Unique # males bred each year
Total Bred (each year)	1,757	1,515	1,313	1,176	1,003	990	922	969	902	993	1,006	Unique # bred each year
Unique Bitches in Conformation (each year)	458	382	394	357	334	326	322	316	297	297	308	Unique # of bitches in Conformation each year
Unique Dogs in Conformation (each year)	296	278	255	267	256	238	239	238	195	183	210	Unique # of males in Conformation each year
Total Unique in Conformation (each year)	754	660	649	624	590	564	561	554	492	480	518	Unique # in Conformation each year
% Change Conformation		-12.5%	-1.7%	-3.9%	-5.4%	-4.4%	-0.5%	-1.2%	-11.2%	-2.4%	7.9%	YOY % Change Conformation total dogs
Unique Bitches in Companion (each year)	52	57	59	62	63	61	61	47	56	50	49	Unique # of bitches in Companion each year
Unique Dogs in Companion (each year)	45	44	51	49	55	52	43	44	41	43	44	Unique # of males in Companion each year
Total Unique in Companion (each year)	97	101	110	111	118	113	104	91	97	93	93	Unique # in Companion each year
% Change Companion		4.1%	8.9%	0.9%	6.3%	-4.2%	-8.0%	-12.5%	6.6%	-4.1%	0.0%	YOY % Change Companion total dogs
Unique Bitches Placing in Performance (each year)	4	5	7	6	4	9	20	7	14	12	22	Unique # of bitches placing in Performance each year
Unique Dogs Placing in Performance (each year)	8	7	5	3	4	9	11	11	9	15	13	Unique # of males placing in Performance each year
Total Unique Placing in Performance (each year)	12	12	12	9	8	18	31	18	23	27	35	Unique # placing in Performance each year
% Change Performance		0.0%	0.0%	-25.0%	-11.1%	125.0%	72.2%	-41.9%	27.8%	17.4%	29.6%	YOY % Change Performance total dogs placing
<b>% Change YOY</b>	<b>2008</b>	<b>2009</b>	<b>2010</b>	<b>2011</b>	<b>2012</b>	<b>2013</b>	<b>2014</b>	<b>2015</b>	<b>2016</b>	<b>2017</b>	<b>2018</b>	
Registered Litters	N/A	-18.2%	-12.0%	-13.3%	-10.6%	5.2%	-11.1%	5.7%	-4.6%	9.4%	7.2%	These %'s are calculated to show the change each year from the previous year.
Litter Complement	N/A	-20.3%	-13.5%	-15.3%	-6.3%	0.1%	-9.0%	6.1%	-3.1%	12.9%	8.7%	
Registered Dogs	N/A	-16.8%	-15.3%	-10.2%	-11.2%	6.5%	0.0%	1.0%	7.3%	5.1%	1.7%	
<b>% Change Relative 2008</b>	<b>2008</b>	<b>2009</b>	<b>2010</b>	<b>2011</b>	<b>2012</b>	<b>2013</b>	<b>2014</b>	<b>2015</b>	<b>2016</b>	<b>2017</b>	<b>2018</b>	
Registered Litters	0.0%	-18.2%	-28.0%	-37.6%	-44.2%	-41.3%	-47.8%	-44.8%	-47.4%	-42.4%	-38.2%	These %'s are calculated to show the change each year compared to 2008.
Litter Complement	0.0%	-20.3%	-31.1%	-41.6%	-45.3%	-45.2%	-50.1%	-47.1%	-48.8%	-42.2%	-37.1%	
Registered Dogs	0.0%	-16.8%	-29.6%	-36.8%	-43.8%	-40.2%	-45.6%	-45.1%	-41.1%	-38.1%	-37.1%	

# Scottish Terriers

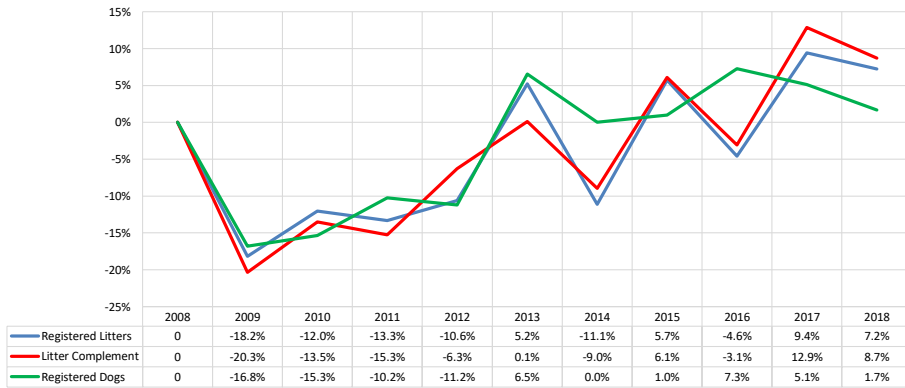
### AKC Dog & Litter Registrations



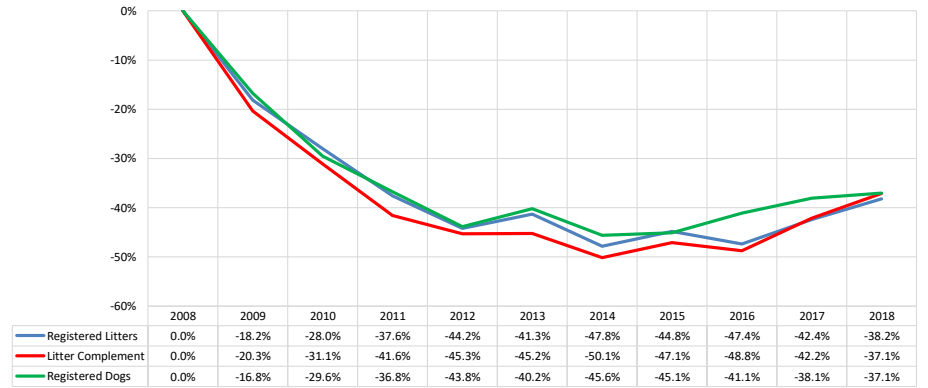
### % of Each Year's Litter Complement that were Eventually Registered (2018 Register Pups to be determined)



### % Change from Previous Year (YOY)

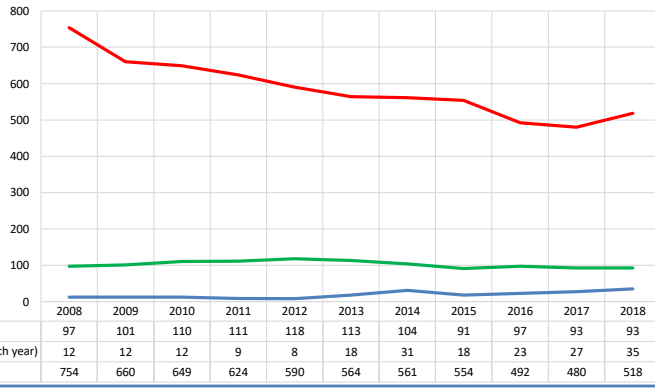


### % Change Relative to 2008

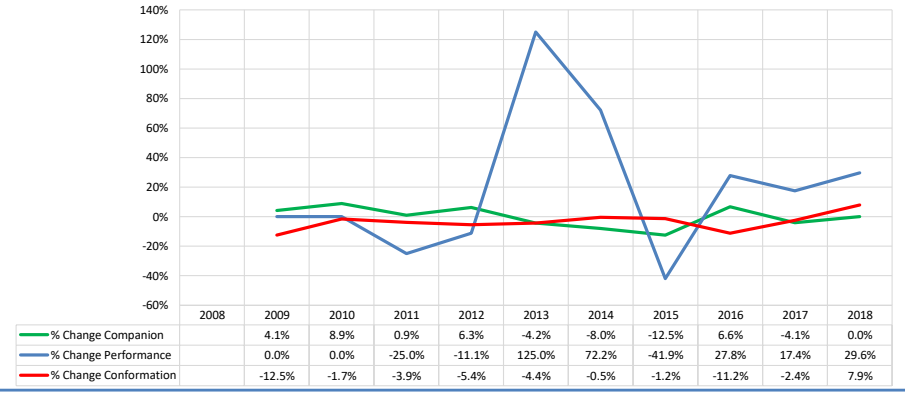


# Scottish Terriers

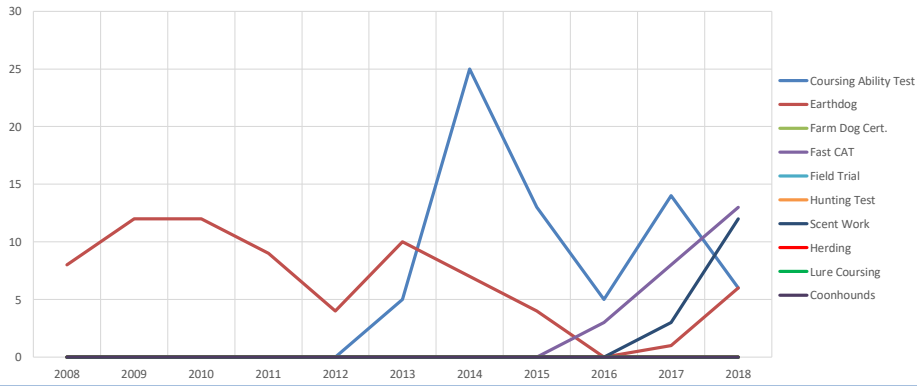
Competing: Total Unique Dogs by Sport Each Year



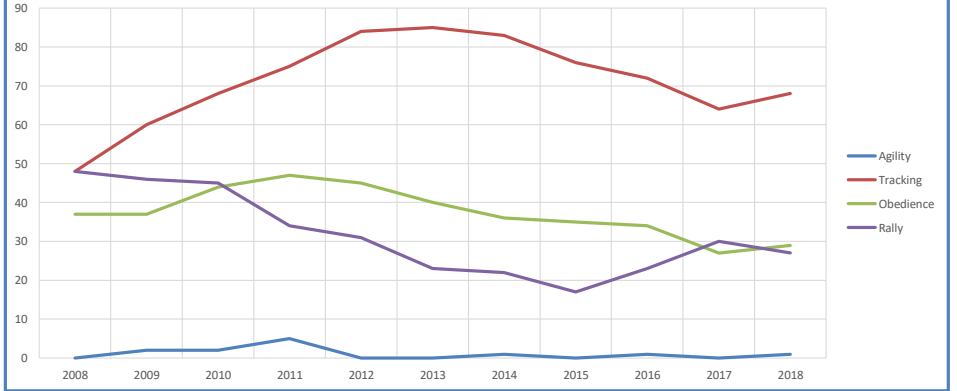
Competing: % Change Unique Total Dogs Year over Year by Sport



Performance: Total Unique Dogs Placing

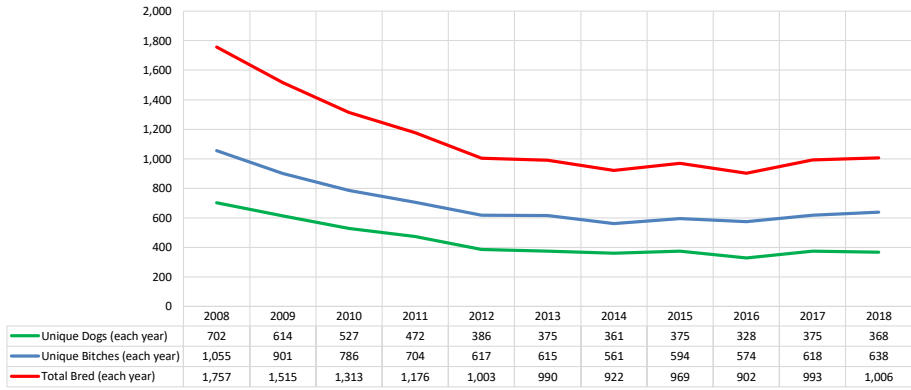


Companion: Total Unique Dogs Entered

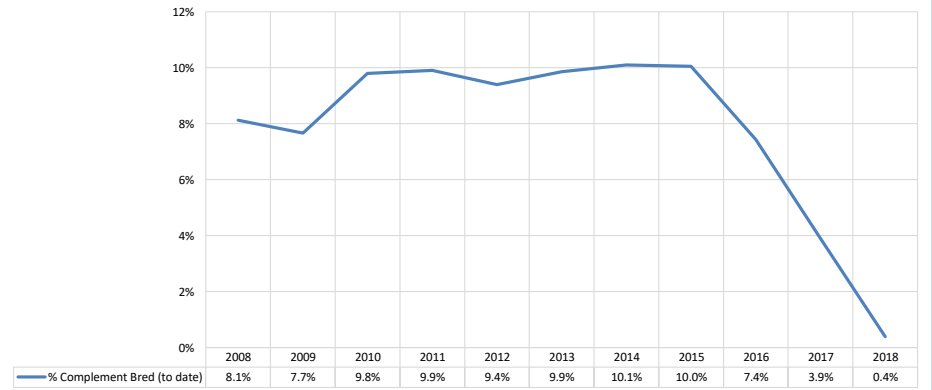


# Scottish Terriers

Breeding: Unique Individual Dogs & Bitches Bred Each Year



% of Each Year's Litter Complement that have been Bred (to date)



Competing: % of Each Year's Litter Complement in Competition

