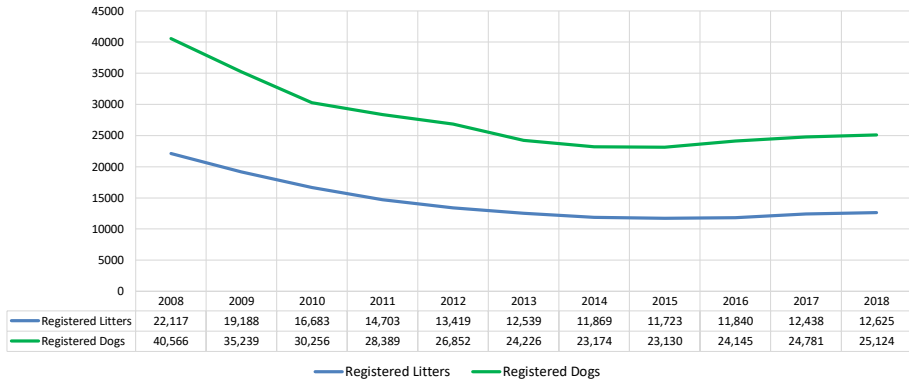


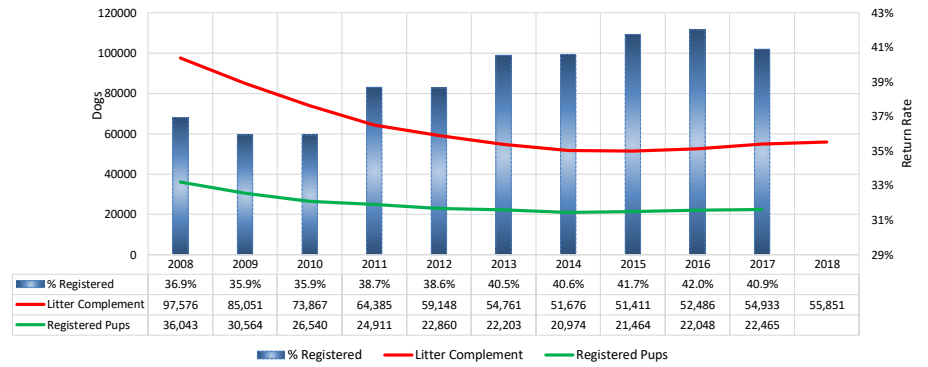
Terrier Group													
Metric	2008	2009	2010	2011	2012	2013	2014	2015	2016	2017	2018	Notes	
	Registered Litters	22,117	19,188	16,683	14,703	13,419	12,539	11,869	11,723	11,840	12,438	12,625	# AKC litters registered each year
Litter Complement	97,576	85,051	73,867	64,385	59,148	54,761	51,676	51,411	52,486	54,933	55,851	# Pups in each year's litters (known as the "Complement")	
Average Complement	4.41	4.43	4.43	4.38	4.41	4.37	4.35	4.39	4.43	4.42	4.42	Average # of pups per litter	
Individually Registered Pups (to date)	36,043	30,564	26,540	24,911	22,860	22,203	20,974	21,464	22,048	22,465	16,263	# Pups from each year's litters individually registered (to date)	
Actual Return Rate (to date)	36.9%	35.9%	35.9%	38.7%	38.6%	40.5%	40.6%	41.7%	42.0%	40.9%	29.1%	% Pups from each year's litters individually registered (to date)	
Limited Registrations (to date)	6,014	5,666	5,219	5,483	5,382	5,385	5,395	5,890	6,413	7,050	5,548	# Limited Registrations from each year's litters (to date)	
% Complement Registered Limited (to date)	6.2%	6.7%	7.1%	8.5%	9.1%	9.8%	10.4%	11.5%	12.2%	12.8%	9.9%	% Pups from each year's litters Registered as Limited (to date)	
Revoked Limited (to date)	78	57	54	52	49	56	72	61	52	49	23	# Revoked Limited Dogs from each year's litters (to date)	
Litters from Revoked Limited (to date)	77	53	51	49	47	53	63	59	52	48	22	Litters involving each year's Revoked Limited (to date)	
Complement Bitches Bred	5,471	4,899	4,352	4,169	4,224	3,885	3,507	3,311	2,715	1,440	213	Bitches from each year's litters that have been bred (to date)	
Complement Dogs Bred	3,104	2,633	2,365	2,082	2,236	2,002	1,698	1,683	1,524	985	182	Males from each year's litters that have been bred (to date)	
Total Complement Bred (to date)	8,575	7,532	6,717	6,251	6,460	5,887	5,205	4,994	4,239	2,425	395	Total from each year's litters that have been bred (to date)	
% Complement Bred (to date)	8.8%	8.9%	9.1%	9.7%	10.9%	10.8%	10.1%	9.7%	8.1%	4.4%	0.7%	% of each year's litters that have been bred (to date)	
Complement Bitches in Conformation	2,459	2,276	2,213	2,180	2,098	2,042	1,940	1,992	1,878	1,849	922	# Bitches from each year's litters in Conformation (to date)	
Complement Dogs in Conformation	1,897	1,675	1,617	1,615	1,563	1,554	1,408	1,414	1,365	1,307	675	# Males from each year's litters in Conformation (to date)	
Total Complement in Conformation (to date)	4,356	3,951	3,830	3,795	3,661	3,596	3,348	3,406	3,243	3,156	1,597	Total from each year's litters in Conformation (to date)	
% Complement in Conformation (to date)	4.5%	4.6%	5.2%	5.9%	6.2%	6.6%	6.5%	6.6%	6.2%	5.7%	2.9%	% of each year's litters in Conformation (to date)	
Total Complement in Companion (to date)	541	458	430	436	367	412	353	283	220	127	23	Total from each year's litters in Companion (to date)	
% Complement in Companion (to date)	0.55%	0.54%	0.58%	0.68%	0.62%	0.75%	0.68%	0.55%	0.42%	0.23%	0.04%	% of each year's litters in Companion (to date)	
Total Complement Placing in Performance (to date)	258	264	281	285	291	331	319	305	314	213	23	Total from each year's litters placing in Performance (to date)	
% Complement Placing in Performance (to date)	0.3%	0.3%	0.4%	0.4%	0.5%	0.6%	0.6%	0.6%	0.6%	0.4%	0.0%	% of each year's litters placing in Performance (to date)	
AKC Dog Registrations	39,264	34,112	29,054	27,082	24,592	23,184	22,325	22,232	23,061	23,925	24,254	# Registered from AKC Litters during each year	
FSS Registrations	481	522	596	687	1,607	338	163	196	37	30	13	# of FSS Dog Registrations each year	
Conditional Registrations	178	116	105	82	59	58	45	43	52	48	30	# of Conditional Registrations each year	
Open Registrations	16	-	-	-	52	79	79	85	361	194	163	# of Open Registrations each year	
Foreign Registrations	627	489	501	538	542	567	562	574	634	584	664	# of Foreign-born Registrations each year	
Total Dogs Registered	40,566	35,239	30,256	28,389	26,852	24,226	23,174	23,130	24,145	24,781	25,124	Total Dog Registrations each year	
Unique Bitches Bred (each year)	18,982	17,083	14,961	13,045	11,832	10,978	10,293	10,113	10,201	10,534	10,591	Unique # bitches bred each year	
Unique Dogs Bred (each year)	12,183	11,082	9,661	8,468	7,495	6,854	6,487	6,280	6,136	6,230	6,238	Unique # males bred each year	
Total Bred (each year)	31,165	28,165	24,622	21,513	19,327	17,832	16,780	16,393	16,337	16,764	16,829	Unique # bred each year	
Unique Bitches in Conformation (each year)	6,811	6,369	6,093	5,816	5,678	5,446	5,355	5,195	5,149	5,028	5,094	Unique # of bitches in Conformation each year	
Unique Dogs in Conformation (each year)	5,226	4,824	4,622	4,561	4,412	4,208	4,100	3,983	3,858	3,748	3,733	Unique # of males in Conformation each year	
Total Unique in Conformation (each year)	12,037	11,193	10,715	10,377	10,090	9,654	9,455	9,178	9,007	8,776	8,827	Unique # in Conformation each year	
% Change Conformation		-7.0%	-4.3%	-3.2%	-2.8%	-4.3%	-2.1%	-2.9%	-1.9%	-2.6%	0.6%	YOY % Change Conformation total dogs	
Unique Bitches in Companion (each year)	1,245	1,237	1,238	1,272	1,243	1,164	1,114	1,096	1,097	1,035	992	Unique # of bitches in Companion each year	
Unique Dogs in Companion (each year)	1,172	1,081	1,108	1,060	1,102	1,074	1,029	1,024	986	912	910	Unique # of males in Companion each year	
Total Unique in Companion (each year)	2,417	2,318	2,346	2,332	2,345	2,238	2,143	2,120	2,083	1,947	1,902	Unique # in Companion each year	
% Change Companion		-4.1%	1.2%	-0.6%	0.6%	-4.6%	-4.2%	-1.1%	-1.7%	-6.5%	-2.3%	YOY % Change Companion total dogs	
Unique Bitches Placing in Performance (each year)	257	311	294	288	284	402	443	358	437	582	811	Unique # of bitches placing in Performance each year	
Unique Dogs Placing in Performance (each year)	269	286	285	255	248	327	388	390	427	524	778	Unique # of males placing in Performance each year	
Total Unique Placing in Performance (each year)	526	597	579	543	532	729	831	748	864	1,106	1,589	Unique # placing in Performance each year	
% Change Performance		13.5%	-3.0%	-6.2%	-2.0%	37.0%	14.0%	-10.0%	15.5%	28.0%	43.7%	YOY % Change Performance total dogs placing	
% Change YOY	2008	2009	2010	2011	2012	2013	2014	2015	2016	2017	2018		
Registered Litters	N/A	-13.2%	-13.1%	-11.9%	-8.7%	-6.6%	-5.3%	-1.2%	1.0%	5.1%	1.5%	These %'s are calculated to show the change each year from the previous year.	
Litter Complement	N/A	-12.8%	-13.1%	-12.8%	-8.1%	-7.4%	-5.6%	-0.5%	2.1%	4.7%	1.7%		
Registered Dogs	N/A	-13.1%	-14.1%	-6.2%	-5.4%	-9.8%	0.0%	-0.2%	4.4%	2.6%	1.4%		
% Change Relative 2008	2008	2009	2010	2011	2012	2013	2014	2015	2016	2017	2018		
Registered Litters	0.0%	-13.2%	-24.6%	-33.5%	-39.3%	-43.3%	-46.3%	-47.0%	-46.5%	-43.8%	-42.9%	These %'s are calculated to show the change each year compared to 2008.	
Litter Complement	0.0%	-12.8%	-24.3%	-34.0%	-39.4%	-43.9%	-47.0%	-47.3%	-46.2%	-43.7%	-42.8%		
Registered Dogs	0.0%	-13.1%	-25.4%	-30.0%	-33.8%	-40.3%	-42.9%	-43.0%	-40.5%	-38.9%	-38.1%		

Terrier Group

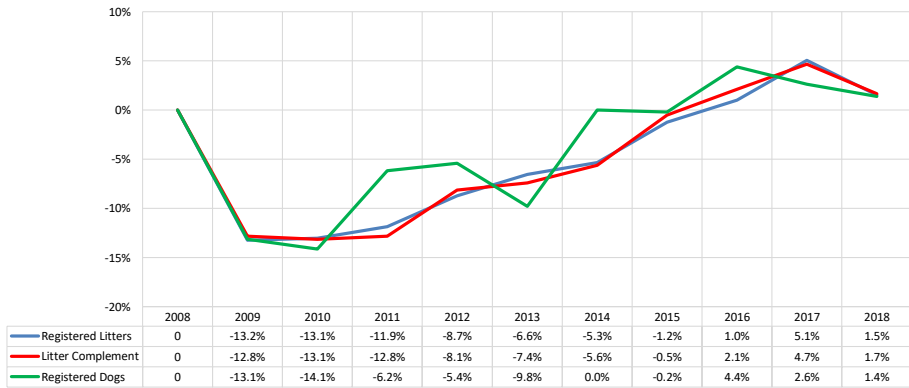
AKC Dog & Litter Registrations



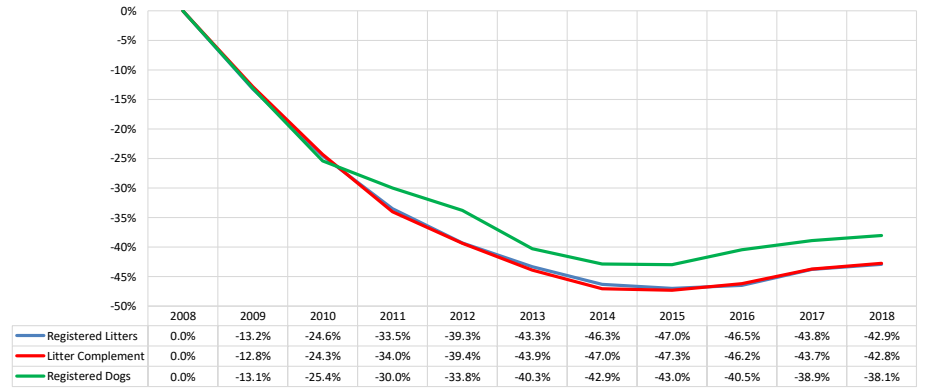
% of Each Year's Litter Complement that were Eventually Registered (2018 Register Pups to be determined)



% Change from Previous Year (YOY)

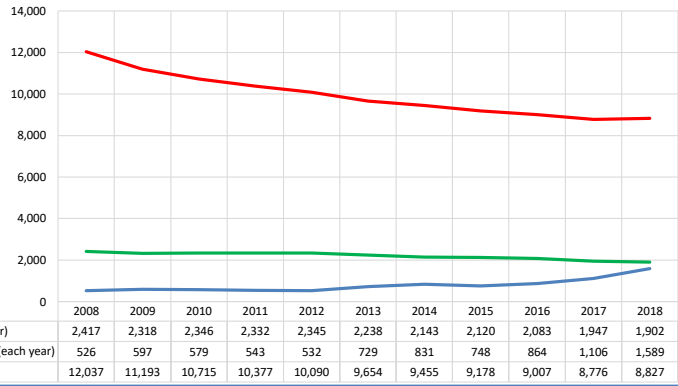


% Change Relative to 2008

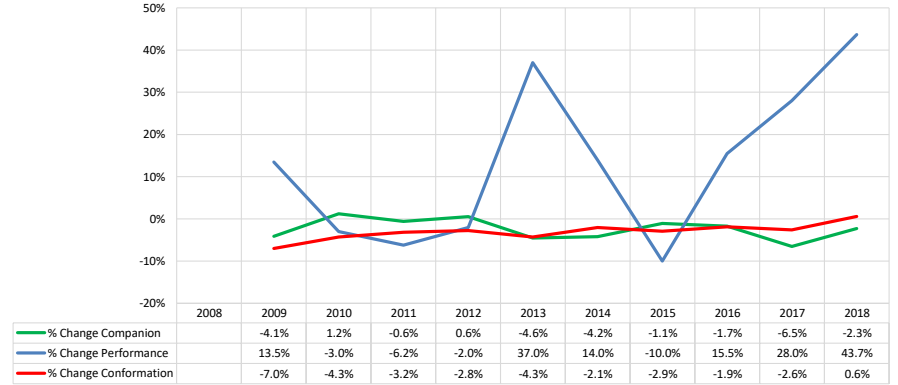


Terrier Group

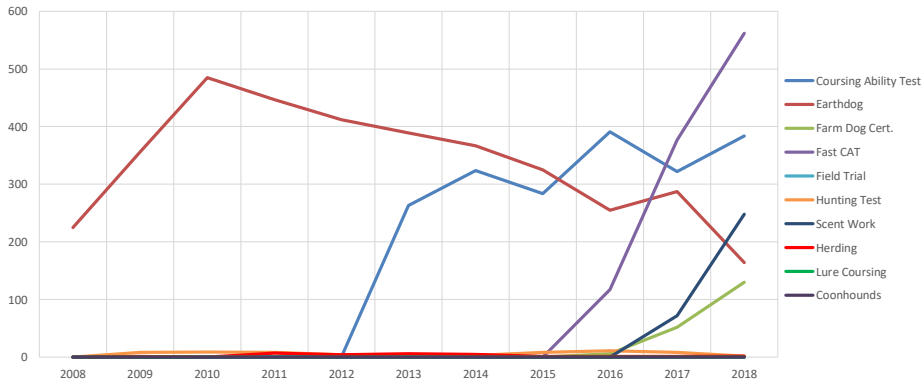
Competing: Total Unique Dogs by Sport Each Year



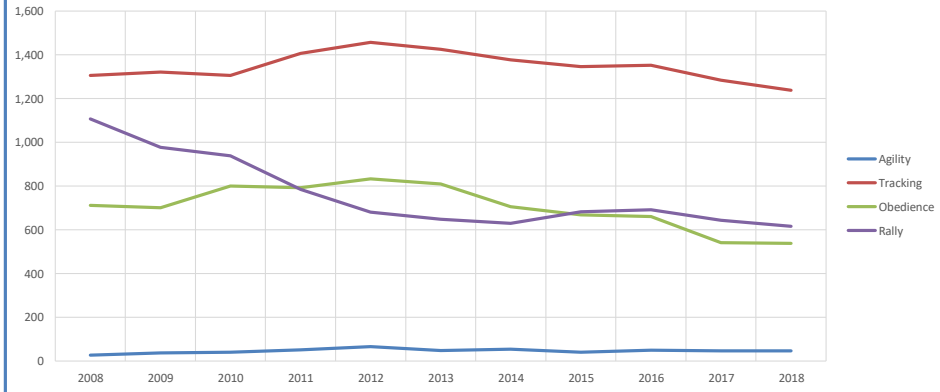
Competing: % Change Unique Total Dogs Year over Year by Sport



Performance: Total Unique Dogs Placing

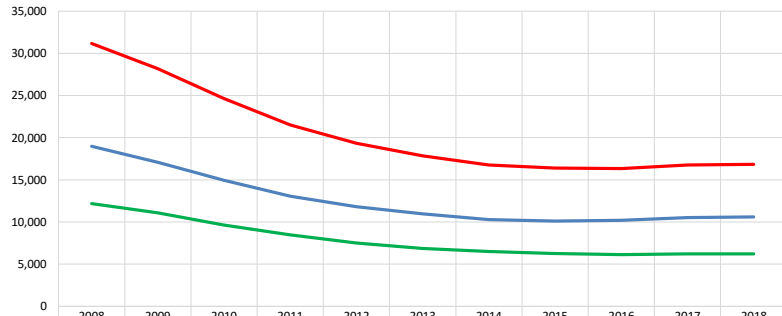


Companion: Total Unique Dogs Entered



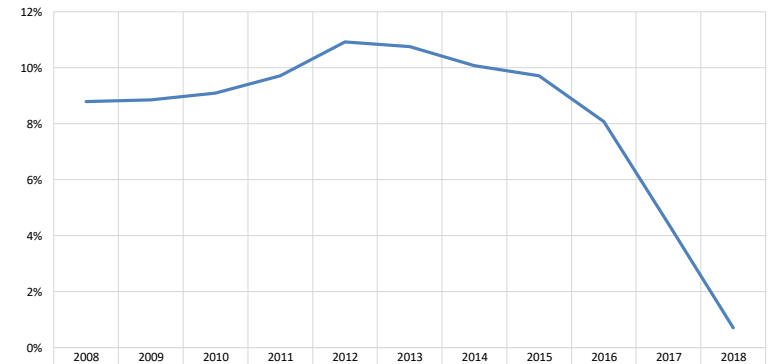
Terrier Group

Breeding: Unique Individual Dogs & Bitches Bred Each Year



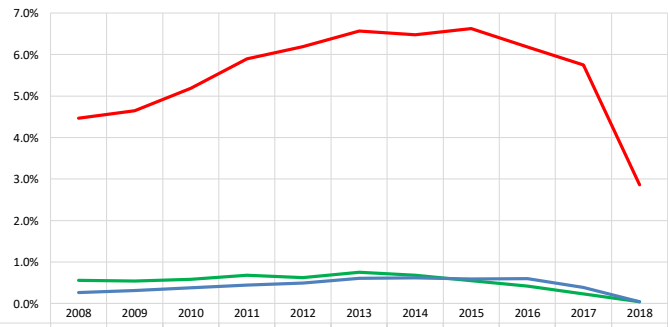
Year	Unique Dogs (each year)	Unique Bitches (each year)	Total Bred (each year)
2008	12,183	18,982	31,165
2009	11,082	17,083	28,165
2010	9,661	14,961	24,622
2011	8,468	13,045	21,513
2012	7,495	11,832	19,327
2013	6,854	10,978	17,832
2014	6,487	10,293	16,780
2015	6,280	10,113	16,393
2016	6,136	10,201	16,337
2017	6,230	10,534	16,764
2018	6,238	10,591	16,829

% of Each Year's Litter Complement that have been Bred (to date)



Year	% Complement Bred (to date)
2008	8.8%
2009	8.9%
2010	9.1%
2011	9.7%
2012	10.9%
2013	10.8%
2014	10.1%
2015	9.7%
2016	8.1%
2017	4.4%
2018	0.7%

Competing: % of Each Year's Litter Complement in Competition



Year	Total Unique in Companion (each year)	Total Unique Placing in Performance (each year)	Total in Conformation (each year)
2008	0.55%	0.3%	4.5%
2009	0.54%	0.3%	4.6%
2010	0.58%	0.4%	5.2%
2011	0.68%	0.4%	5.9%
2012	0.62%	0.5%	6.2%
2013	0.75%	0.6%	6.6%
2014	0.68%	0.6%	6.5%
2015	0.55%	0.6%	6.6%
2016	0.42%	0.6%	6.2%
2017	0.23%	0.4%	5.7%
2018	0.04%	0.0%	2.9%